

# 3265 S&W Display wine cooler

Purchase project



## Display wine cooler

### Specification

1. Size: W4000×D800×H4800mm
2. Material: SUS 304 display wine cooler with 1.2mm glass door (each equipped with a rolling ladder); double-layer insulated chamber with thickness 5mm; tempered vacuum double-layer glass; eight upper and lower doors with large automatic defogging window; high-quality appearance.

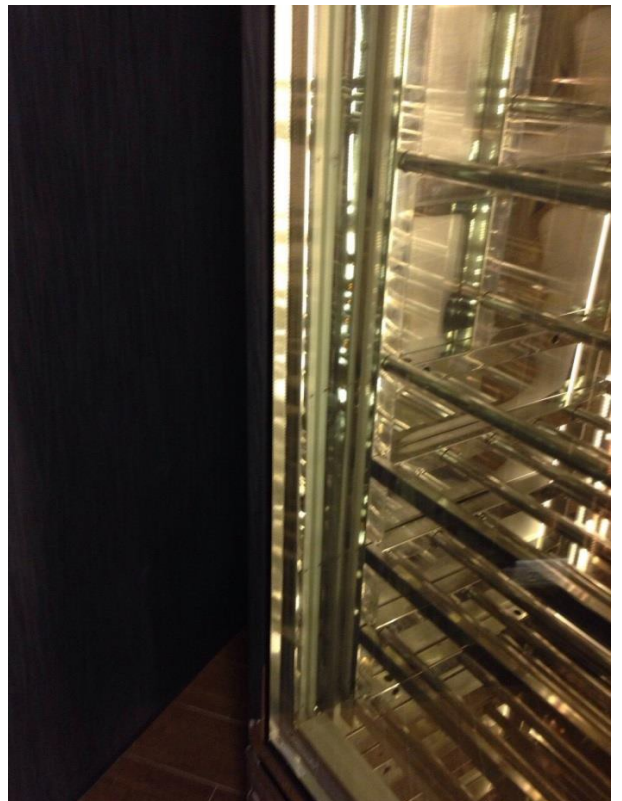
3. Red wine racks: mirror stainless steel, square/round pipe bottle display.

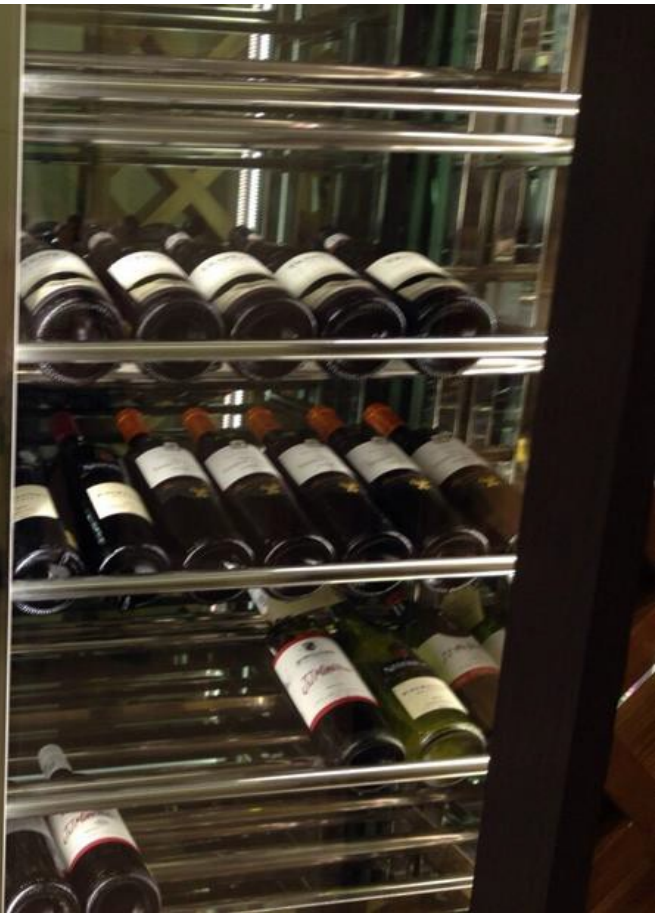
4. Control panel: 214x24mm; five-key membrane touch switch; 7 LED indicators show heating, humidification, dehumidification, cooling, setting, and abnormal alarm; two groups of three LED displays: red and green lights show temperature and humidity; displays of English data and negative numbers on the touch panel are available. Humidity (00.0~100%RH), temperature (-40~125°C), and resolution  $\pm 0.1\%RH \pm 0.1^\circ C$  are on the upper left. You can set the calibration cycle notification. 1~10 digit combination lock function can be used to avoid accidental touch. It can set open door time, alarm time for 1~10 minute. The illumination button switch can display the highest and the lowest temperature and humidity record values. It can also set full load warning or coverage records.



5. Control unit: separate control unit; the compressor in the outdoor unit is placed outside. The compressor uses imported Danfoss 1.5HP, high humidity evaporator, a condenser. The indoor environment will not be affected by noise. Air-cooled fully enclosed compressor adopts eco-friendly refrigerant R410a. Overload protection switch; patented water-free automatic power off humidifier, over temperature protection switch heater, automatic defogging hotline; dehumidification through the solenoid valve to the water storage tray to the natural evaporation of the heat pipe; air-cooled compressor and the radiator moved to the outside for about 10 meters to avoid noise and heat source; the drain is required under the wine cooler.
6. Light switch: built-in power-saving LED3000K strip light, zero heat.
7. Temperature and humidity control range: humidity 50~80%RH, stepless temperature control 12~25°C, suitable for red and white wine and cigar. The setting is displayed on the touch panel and adjustable with the outage memory and automatic booting.
8. Temperature/ Humidity record: 32,000 records of temperature/humidity and time are available for display from PC or the touch panel, where the termination or cancelation of record can be set with an interval of 1 minute-24 hours. Or you can purchase PG series computer which can be connected through RS232, RS485. The device can instantly monitor and display the recorded temperature and humidity time (year, month, day, hour, minute and second) values and curve charts which can be saved and printed through Windows at any time. Data from 32 chambers can be monitored and recorded at the same time through one computer.
9. Abnormal alarm: temperature and humidity time setting such as abnormal high temperature, high humidity, low temperature, and low humidity; warning sound and temperature / humidity flashing show abnormality.
10. Power supply: AC-220V/60Hz single-phase power supply with fuse protection and built-in 20A/2P leakage circuit breaker.

Evergreen Hotel Tainan



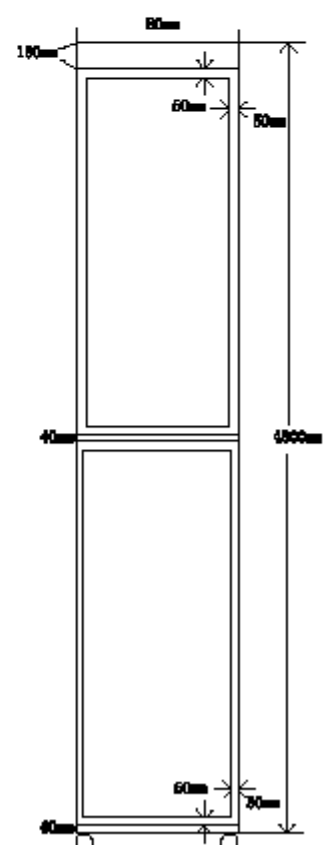
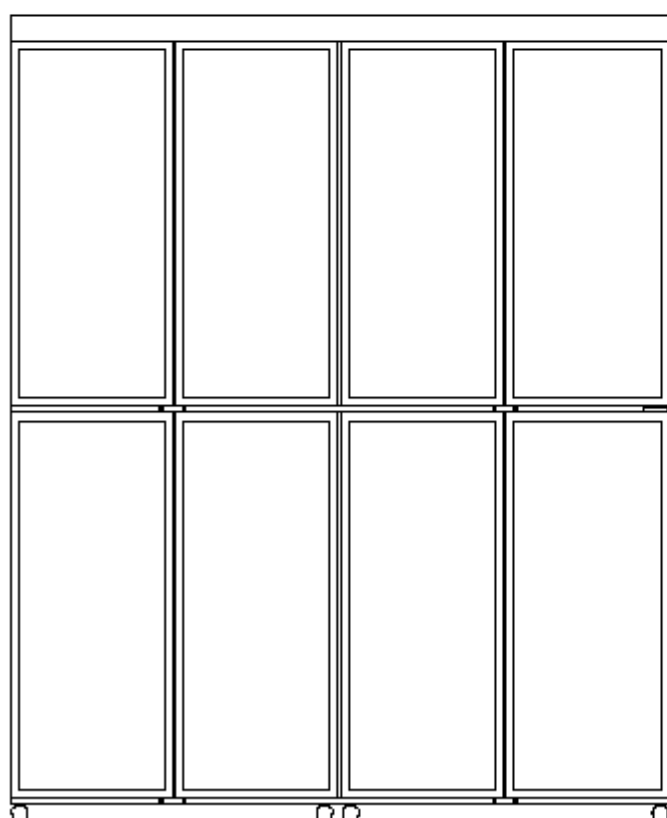
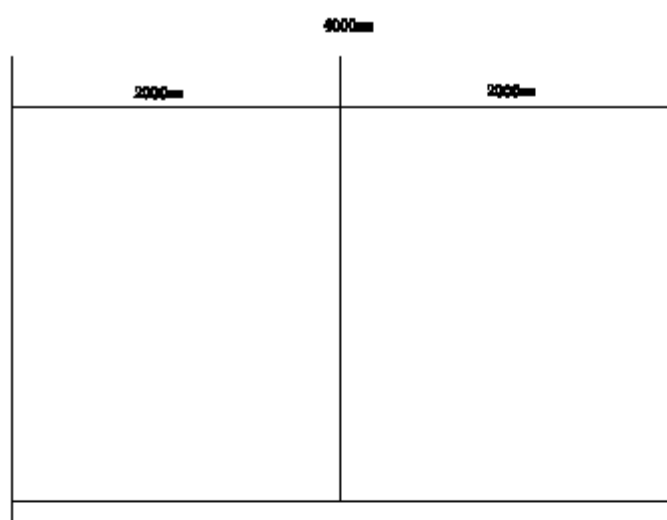


Outdoor chambers









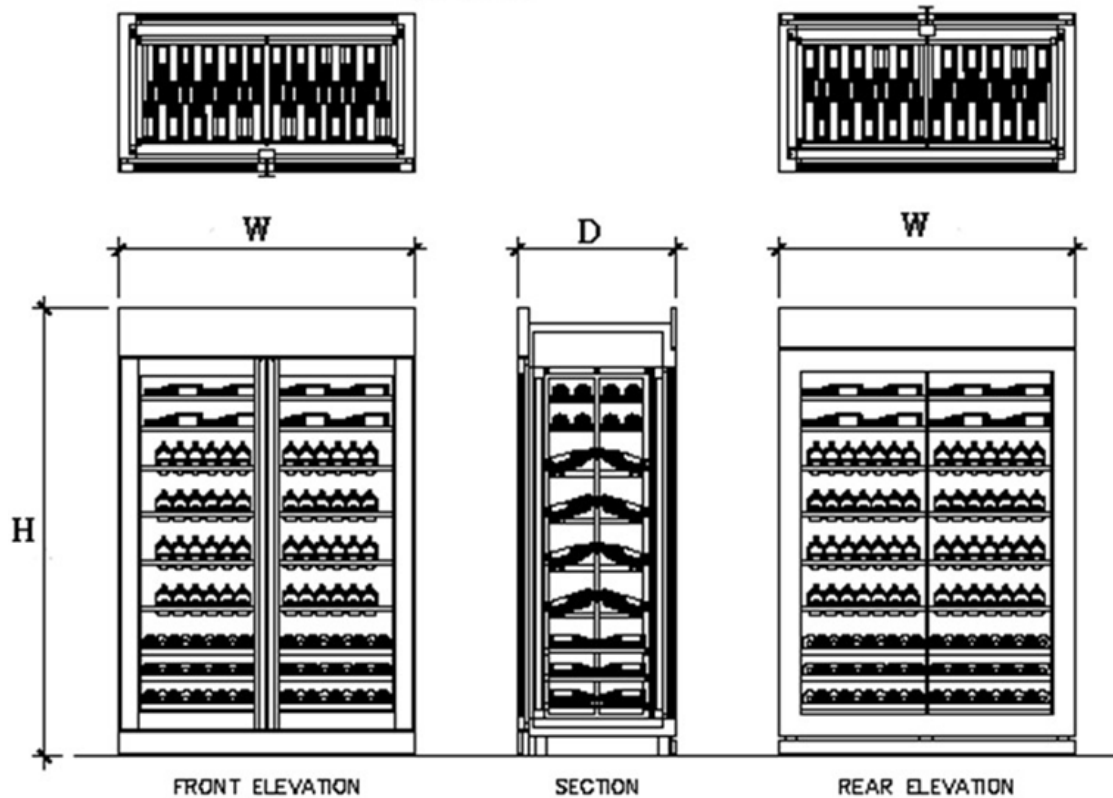
### Equipment specification

(Schematic diagram)

Name: Display Wine Cooler (two doors: front door for opening and rear door for display)

Appearance and size:

Quantity: unit



1. Outer and inner chambers and the front of the chamber are made of 1.2 mm SUS 304 mirror stainless steel.
2. Square /round pipe wine racks are made of mirror stainless steel.
3. Tempered vacuum double-layer defogging glass and LED3000K strip light with zero heat are used.
4. Red wine storage temperature:  $14^{\circ}\text{C} \sim 18^{\circ}\text{C}$ .
5. The temperature controller adopts an electronic temperature display controller that is placed on the front panel.
6. The imported Danfoss 1.5HP compressor, 3/8 4" 72 meters high humidity evaporator, and a 3/8 10" 7-1/2 HP condenser are used.
7. The air-cooled compressor and the radiator will be moved to the outside for about 10 meters to avoid noise and heat source.
8. The drain is required under the wine cooler.